

ScopiumCam

Moon and Planetary Imager



Installation and user guide

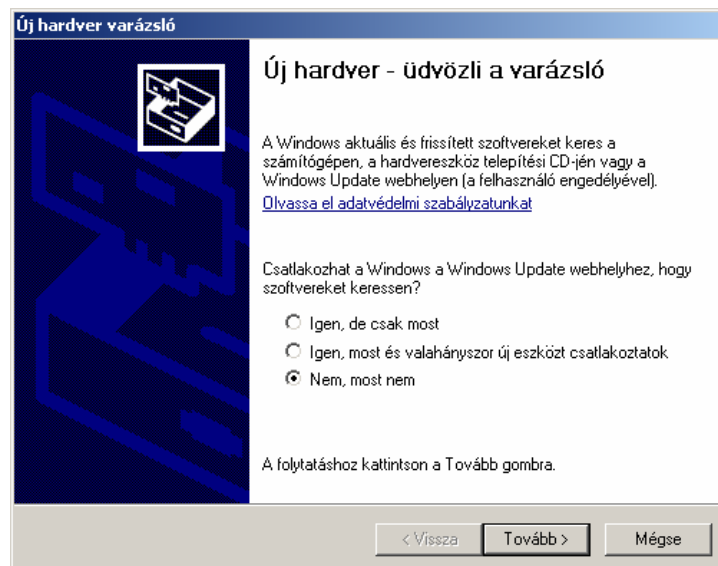
1. System requirements

Before installation make sure your system meets or exceeds the following software and hardware requirements:

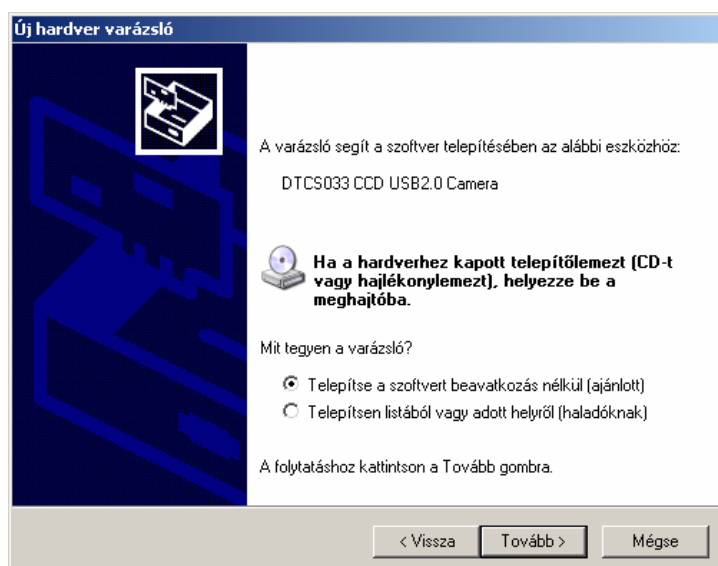
- PC running Windows 98SE - XP - Vista (32 bit)
- 333Mhz Pentium II or better
- 128 MB RAM
- Screen resolution of 1024x768 or higher

2. Camera driver installation

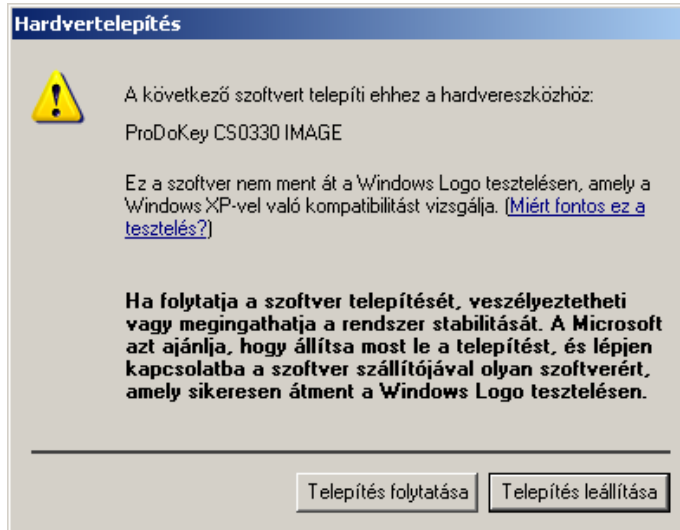
- 1) Insert the installation disc into your computer's CD/DVD drive. Make sure ScopiumCam is **not** connected.
- 2) Execute d:\driver\setup.exe where d: is the label of your CD/DVD drive. During installation Windows may warn you that the driver of the camera is not digitally signed. It is safe to continue installation, press "Continue install" button to do so.
- 3) Connect your camera to the USB 2.0 port of your computer, Windows will recognize it as follows:



Select „No, not now” option to prevent Windows Installer from connecting the Windows Update website. Press **Next** button.



Select „Install software automatically” option.



Windows may warn you that the driver of the camera is not digitally signed. It is safe to continue installation, press “Continue install” button to do so.

Press **Finish** button to complete installation.

3. Install capture software

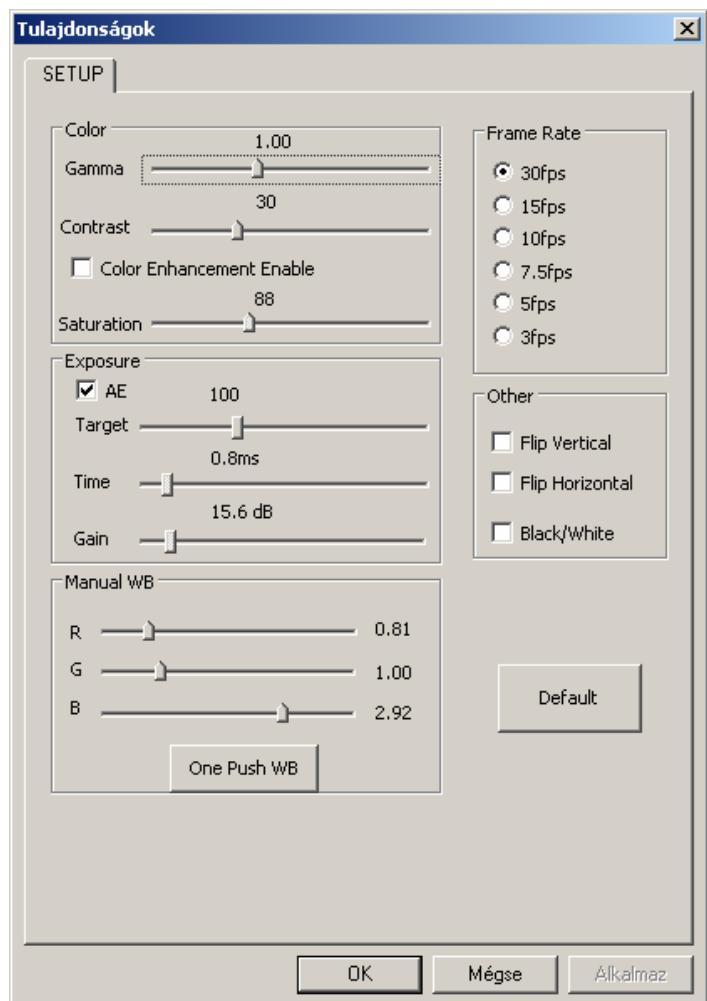
We recommend using AmCap as a capture software for the ScopiumCam, version 9.06 is available from the install disk. You may use any other capture software if it supports Microsoft’s DirectShow interface.

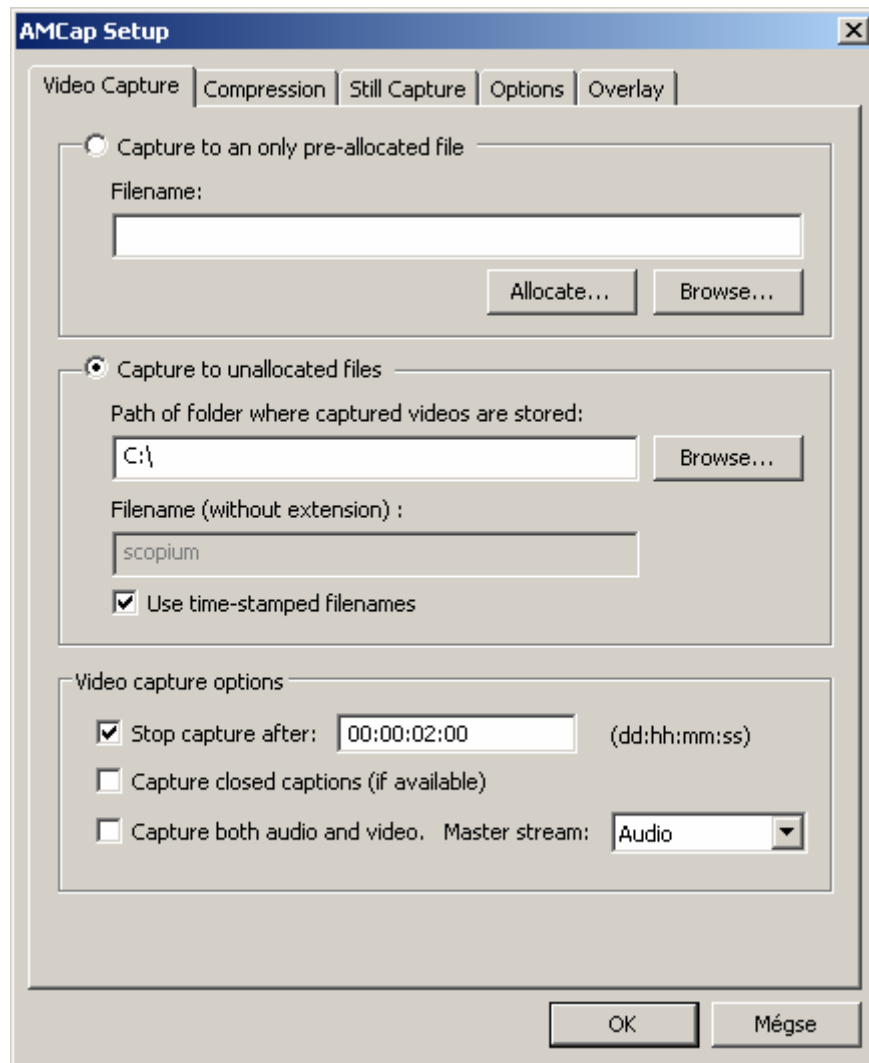
You may download the demo version of AmCap 9.2 from the author’s website (<http://noeld.com/programs.asp?cat=video>). If you opt for installing AmCap v9.06 from the installation disk, execute d:\AmCap\AmCapInstall.exe application and install the software as per the instructions.

The following chapter gives instructions for capturing video stream using your ScopiumCam with AmCap 9.2.

4. Capturing video

- 1) Execute AmCap by clicking on the shortcut in Programs menu
- 2) Camera displays the real-time image. If it doesn’t, check ‘Options > Preview’ menuitem.
- 3) Select ‘Options > Video Capture Filter’ menu item.
- 4) Adjust the camera settings, feel free to experiment the different settings.





5) You can specify your capture properties in '*Capture > Setup*' menu item.

In '*Path of folder where captured videos are stored:*' field you can define the location of your video streams. Press browse Button to locate it.

Select '*Use time-stamped filenames*' checkbox to create video streams based on your computer's system date and time. If you uncheck it, specify your stream's name in '*Filename*' edit box.

'*Stop capture after:*' specifies the length of your video stream. If you check it capture will stop after the specified time elapses, otherwise you need to manually stop it.

By default, AmCap captures video stream in uncompressed format, this gives the best image quality but requires huge storage capacity. You may compress the video stream using any codec that is available for Windows in Compression tab.

6) Start capture by selecting '*Capture > Start Capture*' menuitem

7) Stop capture by selecting '*Capture > Stop Capture*' menuitem

5. Processing video streams

Now that your video stream has been captured the individual frames can be inspected, aligned and stacked using the included RegiStax software.

6. Specification

- Chip: Sony HAD colour CCD
- Resolution: 640x480 pixel
- Pixel size: 5.6 mikron
- Chip size: 3.6 mm x 2.7 mm
- Sensitivity: <1 lux
- PC connection: USB 2.0
- Other: 1.25" nosepiece and IR blocking filter