



Prüfbericht - Nr.: 238133684z 001		Seite 1 von 21	
<i>Test Report No.:</i>		<i>Page 1 of 21</i>	
Auftraggeber: <i>Client:</i>	Formosa Chemicals & Fibre Corporation 201, Tung Hwa N. Rd., Taipei 105, Taiwan, R.O.C.		
Gegenstand der Prüfung: <i>Test Item:</i>	Acrylonitrile/Butadiene/Styrene Copolymers (丙烯腈/丁二烯/苯乙烯共聚合樹脂)		
Bezeichnung: <i>Identification:</i>	TAIRILAC ABS: AG15AB, AE10EPJ, AE8000, AF3500, AF3530, AF3535, AF3537, AF3560, AG1000, AG100H, AG10AP, AG12A0, AG12A3, AG12AJ, AG15A1-H, AG15AJ, AG20GF, AG22AT, AG23AT, ANC100, ANC120, AT5500, AX4000, AX4100, AX4300, AG15A1, AE8200, AF3600, AG10NP, AG10NP-H, AG10NP-T, AG12A1, AG15A0, AG15A2, AG15A3, AG15AM, AG15E0, AG15E1, AG15E3, AG16A1		
Anlieferungszustand: <i>Delivery condition:</i>	apparent good	Eingangsdatum: <i>Date of Receipt:</i>	2020-01-15, 2020-01-17
Prüfart: <i>Testing location:</i>	TÜV Rheinland (Shanghai) Co. Ltd. TÜV Rheinland Hong Kong Ltd.		
Prüfgrundlage: <i>Test specification:</i>	According to RoHS (recast): Restriction of the Use of Certain Hazardous Substances in Electrical and Electronic Equipment, 2011/65/EU Annex II and its amendment Directive (EU) 2015/863: Total Content of Lead, Cadmium, Mercury, Chromium VI, Polybrominated Biphenyls, Polybrominated Diphenyl Ethers; and Benzylbutyl phthalate (BBP), Dibutyl phthalate (DBP), Bis(2-ethylhexyl) phthalate (DEHP), Diisobutyl phthalate (DIBP)		
Prüfresultat: <i>Test result:</i>	According to the kind and extend of tests performed the above mentioned test item passed the test specification.		
geprüft: <i>tested by:</i>	kontrolliert: <i>checked by:</i>		
			
2020-02-12	Anya Wang /Project Coordinator	2020-02-12	Arthur Cheng /Project Manager
Datum <i>Date</i>	Name/Stellung <i>Name/Position</i>	Unterschrift <i>Signature</i>	Datum <i>Date</i>
	Name/Stellung <i>Name/Position</i>	Unterschrift <i>Signature</i>	
Sonstiges/ Other Aspects:			
Test period: 2020-01-15 – 2020-02-04			
Abkürzungen:	ok / P = entspricht Prüfgrundlage	Abbreviations:	ok / P = passed
	fail / F = entspricht nicht Prüfgrundlage		fail / F = failed
	n.a. / N = nicht anwendbar		n.a. / N = not applicable
Dieser Prüfbericht bezieht sich nur auf das o.g. Prüfmuster und darf ohne Genehmigung der Prüfstelle nicht auszugsweise vervielfältigt werden. Dieser Bericht berechtigt nicht zur Verwendung eines Prüfzeichens.			
<i>This test report relates to the a. m. test sample. Without permission of the test center this test report is not permitted to be duplicated in extracts. This test report does not entitle to carry any safety mark on this or similar products.</i>			

Test Report No. : 238133684z 001
Customer : Formosa Chemicals & Fibre Corporation

2020-02-12

Sample list:

Mat. No.	Description	Material	Color	Location / Lab no.:
1	AG15AB	Plastic	Black	TCL200115-02a
2	AE10EPJ	Plastic	Black	TCL200115-02b
3	AE8000	Plastic	Off white	TCL200115-02c
4	AF3500	Plastic	Off white	TCL200115-02d
5	AF3530	Plastic	Off white	TCL200115-02e
6	AF3535	Plastic	Off white	TCL200115-02f
7	AF3537	Plastic	Off white	TCL200115-02g
8	AF3560	Plastic	Off white	TCL200115-02h
9	AG1000	Plastic	Off white	TCL200115-02i
10	AG100H	Plastic	Off white	TCL200115-02j
11	AG10AP	Plastic	Off white	TCL200115-02k
12	AG12A0	Plastic	Off white	TCL200115-02l
13	AG12A3	Plastic	Off white	TCL200115-02m
14	AG12AJ	Plastic	Black	TCL200115-02n
15	AG15A1-H	Plastic	Off white	TCL200115-02o
16	AG15AJ	Plastic	Black	TCL200115-02p
17	AG20GF	Plastic	Off white	TCL200115-02q
18	AG22AT	Plastic	Off white	TCL200115-02r
19	AG23AT	Plastic	Off white	TCL200115-02s
20	ANC100	Plastic	Off white	TCL200115-02t
21	ANC120	Plastic	Off white	TCL200115-02u
22	AT5500	Plastic	Transparent	TCL200115-02v
23	AX4000	Plastic	Off white	TCL200115-02w
24	AX4100	Plastic	Off white	TCL200115-02x
25	AX4300	Plastic	Off white	TCL200115-02y
26	AG15A1	Plastic	Off white	TCL200117-05a
27	AE8200	Plastic	Off white	TCL200117-05b
28	AF3600	Plastic	Off white	TCL200117-05c
29	AG10NP	Plastic	Off white	TCL200117-05d
30	AG10NP-H	Plastic	Off white	TCL200117-05e
31	AG10NP-T	Plastic	Off white	TCL200117-05f
32	AG12A1	Plastic	Off white	TCL200117-05g
33	AG15A0	Plastic	Off white	TCL200117-05h
34	AG15A2	Plastic	Off white	TCL200117-05i
35	AG15A3	Plastic	Off white	TCL200117-05j
36	AG15AM	Plastic	Off white	TCL200117-05k
37	AG15E0	Plastic	Off white	TCL200117-05l
38	AG15E1	Plastic	Off white	TCL200117-05m
39	AG15E3	Plastic	Off white	TCL200117-05n
40	AG16A1	Plastic	Off white	TCL200117-05o

Test Report No. : 238133684z 001
 Customer : Formosa Chemicals & Fibre Corporation
 Test Method : Total Cadmium, Lead, Mercury, Chromium
 - Ref. to IEC 62321-4:2013 and IEC 62321-5:2013
 Chromium (VI)
 - For Metal material - Ref. to IEC 62321-7-1:2015
 - For Plastic or Electronic material - Ref. to IEC 62321-7-2:2017
 - For Leather material - Ref. to EN ISO 17075-1:2017
 PBBs, PBDEs - Ref. to IEC 62321-6:2015

2020-02-12

Sample/Material No.		RL	1	2	3	4
Cadmium (Cd)	mg/kg	2	< RL	< RL	< RL	< RL
Lead (Pb)	mg/kg	2	< RL	< RL	< RL	< RL
Mercury (Hg)	mg/kg	2	< RL	< RL	< RL	< RL
Chromium VI (Cr VI)*	mg/kg	8	< RL	< RL	< RL	< RL
Sum of Polybrominated biphenyls (PBBs)	mg/kg	-	< RL	< RL	< RL	< RL
Monobromobiphenyl	mg/kg	5	< RL	< RL	< RL	< RL
Dibromobiphenyl	mg/kg	5	< RL	< RL	< RL	< RL
Tribromobiphenyl	mg/kg	5	< RL	< RL	< RL	< RL
Tetrabromobiphenyl	mg/kg	5	< RL	< RL	< RL	< RL
Pentabromobiphenyl	mg/kg	5	< RL	< RL	< RL	< RL
Hexabromobiphenyl	mg/kg	5	< RL	< RL	< RL	< RL
Heptabromobiphenyl	mg/kg	5	< RL	< RL	< RL	< RL
Octabromobiphenyl	mg/kg	5	< RL	< RL	< RL	< RL
Nonabromobiphenyl	mg/kg	5	< RL	< RL	< RL	< RL
Decabromobiphenyl	mg/kg	5	< RL	< RL	< RL	< RL
Sum of Polybrominated diphenyl ethers (PBDEs)	mg/kg	-	< RL	< RL	< RL	< RL
Monobromodiphenyl ether	mg/kg	5	< RL	< RL	< RL	< RL
Dibromodiphenyl ether	mg/kg	5	< RL	< RL	< RL	< RL
Tribromodiphenyl ether	mg/kg	5	< RL	< RL	< RL	< RL
Tetrabromodiphenyl ether	mg/kg	5	< RL	< RL	< RL	< RL
Pentabromodiphenyl ether	mg/kg	5	< RL	< RL	< RL	< RL
Hexabromodiphenyl ether	mg/kg	5	< RL	< RL	< RL	< RL
Heptabromodiphenyl ether	mg/kg	5	< RL	< RL	< RL	< RL
Octabromodiphenyl ether	mg/kg	5	< RL	< RL	< RL	< RL
Nonabromodiphenyl ether	mg/kg	5	< RL	< RL	< RL	< RL
Decabromodiphenyl ether	mg/kg	5	< RL	< RL	< RL	< RL

Notes:

- < = less than
- RL = Reporting Limit
- n.a. = not applicable
- mg/kg = milligram per kilogram
- * Once the total Cr content in metal/ plastic or electronic sample is found to be exceeded the limit, the Cr (VI) content will be confirmed with reference to IEC 62321-7-1:2015/ IEC 62321-7-2:2017

Test Report No. : 238133684z 001
 Customer : Formosa Chemicals & Fibre Corporation
 Test Method : Total Cadmium, Lead, Mercury, Chromium
 - Ref. to IEC 62321-4:2013 and IEC 62321-5:2013
 Chromium (VI)
 - For Metal material - Ref. to IEC 62321-7-1:2015
 - For Plastic or Electronic material - Ref. to IEC 62321-7-2:2017
 - For Leather material - Ref. to EN ISO 17075-1:2017
 PBBs, PBDEs - Ref. to IEC 62321-6:2015

2020-02-12

Sample/Material No.		RL	5	6	7	8
Cadmium (Cd)	mg/kg	2	< RL	< RL	< RL	< RL
Lead (Pb)	mg/kg	2	< RL	< RL	< RL	< RL
Mercury (Hg)	mg/kg	2	< RL	< RL	< RL	< RL
Chromium VI (Cr VI)*	mg/kg	8	< RL	< RL	< RL	< RL
Sum of Polybrominated biphenyls (PBBs)	mg/kg	-	< RL	< RL	< RL	< RL
Monobromobiphenyl	mg/kg	5	< RL	< RL	< RL	< RL
Dibromobiphenyl	mg/kg	5	< RL	< RL	< RL	< RL
Tribromobiphenyl	mg/kg	5	< RL	< RL	< RL	< RL
Tetrabromobiphenyl	mg/kg	5	< RL	< RL	< RL	< RL
Pentabromobiphenyl	mg/kg	5	< RL	< RL	< RL	< RL
Hexabromobiphenyl	mg/kg	5	< RL	< RL	< RL	< RL
Heptabromobiphenyl	mg/kg	5	< RL	< RL	< RL	< RL
Octabromobiphenyl	mg/kg	5	< RL	< RL	< RL	< RL
Nonabromobiphenyl	mg/kg	5	< RL	< RL	< RL	< RL
Decabromobiphenyl	mg/kg	5	< RL	< RL	< RL	< RL
Sum of Polybrominated diphenyl ethers (PBDEs)	mg/kg	-	< RL	< RL	< RL	< RL
Monobromodiphenyl ether	mg/kg	5	< RL	< RL	< RL	< RL
Dibromodiphenyl ether	mg/kg	5	< RL	< RL	< RL	< RL
Tribromodiphenyl ether	mg/kg	5	< RL	< RL	< RL	< RL
Tetrabromodiphenyl ether	mg/kg	5	< RL	< RL	< RL	< RL
Pentabromodiphenyl ether	mg/kg	5	< RL	< RL	< RL	< RL
Hexabromodiphenyl ether	mg/kg	5	< RL	< RL	< RL	< RL
Heptabromodiphenyl ether	mg/kg	5	< RL	< RL	< RL	< RL
Octabromodiphenyl ether	mg/kg	5	< RL	< RL	< RL	< RL
Nonabromodiphenyl ether	mg/kg	5	< RL	< RL	< RL	< RL
Decabromodiphenyl ether	mg/kg	5	< RL	< RL	< RL	< RL

Notes:

- < = less than
- RL = Reporting Limit
- n.a. = not applicable
- mg/kg = milligram per kilogram
- * Once the total Cr content in metal/ plastic or electronic sample is found to be exceeded the limit, the Cr (VI) content will be confirmed with reference to IEC 62321-7-1:2015/ IEC 62321-7-2:2017

Test Report No. : 238133684z 001
 Customer : Formosa Chemicals & Fibre Corporation
 Test Method : Total Cadmium, Lead, Mercury, Chromium
 - Ref. to IEC 62321-4:2013 and IEC 62321-5:2013
 Chromium (VI)
 - For Metal material - Ref. to IEC 62321-7-1:2015
 - For Plastic or Electronic material - Ref. to IEC 62321-7-2:2017
 - For Leather material - Ref. to EN ISO 17075-1:2017
 PBBs, PBDEs - Ref. to IEC 62321-6:2015

2020-02-12

Sample/Material No.		RL	9	10	11	12
Cadmium (Cd)	mg/kg	2	< RL	< RL	< RL	< RL
Lead (Pb)	mg/kg	2	< RL	< RL	< RL	< RL
Mercury (Hg)	mg/kg	2	< RL	< RL	< RL	< RL
Chromium VI (Cr VI)*	mg/kg	8	< RL	< RL	< RL	< RL
Sum of Polybrominated biphenyls (PBBs)	mg/kg	-	< RL	< RL	< RL	< RL
Monobromobiphenyl	mg/kg	5	< RL	< RL	< RL	< RL
Dibromobiphenyl	mg/kg	5	< RL	< RL	< RL	< RL
Tribromobiphenyl	mg/kg	5	< RL	< RL	< RL	< RL
Tetrabromobiphenyl	mg/kg	5	< RL	< RL	< RL	< RL
Pentabromobiphenyl	mg/kg	5	< RL	< RL	< RL	< RL
Hexabromobiphenyl	mg/kg	5	< RL	< RL	< RL	< RL
Heptabromobiphenyl	mg/kg	5	< RL	< RL	< RL	< RL
Octabromobiphenyl	mg/kg	5	< RL	< RL	< RL	< RL
Nonabromobiphenyl	mg/kg	5	< RL	< RL	< RL	< RL
Decabromobiphenyl	mg/kg	5	< RL	< RL	< RL	< RL
Sum of Polybrominated diphenyl ethers (PBDEs)	mg/kg	-	< RL	< RL	< RL	< RL
Monobromodiphenyl ether	mg/kg	5	< RL	< RL	< RL	< RL
Dibromodiphenyl ether	mg/kg	5	< RL	< RL	< RL	< RL
Tribromodiphenyl ether	mg/kg	5	< RL	< RL	< RL	< RL
Tetrabromodiphenyl ether	mg/kg	5	< RL	< RL	< RL	< RL
Pentabromodiphenyl ether	mg/kg	5	< RL	< RL	< RL	< RL
Hexabromodiphenyl ether	mg/kg	5	< RL	< RL	< RL	< RL
Heptabromodiphenyl ether	mg/kg	5	< RL	< RL	< RL	< RL
Octabromodiphenyl ether	mg/kg	5	< RL	< RL	< RL	< RL
Nonabromodiphenyl ether	mg/kg	5	< RL	< RL	< RL	< RL
Decabromodiphenyl ether	mg/kg	5	< RL	< RL	< RL	< RL

Notes:

- < = less than
- RL = Reporting Limit
- n.a. = not applicable
- mg/kg = milligram per kilogram
- * Once the total Cr content in metal/ plastic or electronic sample is found to be exceeded the limit, the Cr (VI) content will be confirmed with reference to IEC 62321-7-1:2015/ IEC 62321-7-2:2017

Test Report No. : 238133684z 001
 Customer : Formosa Chemicals & Fibre Corporation
 Test Method : Total Cadmium, Lead, Mercury, Chromium
 - Ref. to IEC 62321-4:2013 and IEC 62321-5:2013
 Chromium (VI)
 - For Metal material - Ref. to IEC 62321-7-1:2015
 - For Plastic or Electronic material - Ref. to IEC 62321-7-2:2017
 - For Leather material - Ref. to EN ISO 17075-1:2017
 PBBs, PBDEs - Ref. to IEC 62321-6:2015

2020-02-12

Sample/Material No.		RL	13	14	15	16
Cadmium (Cd)	mg/kg	2	< RL	< RL	< RL	< RL
Lead (Pb)	mg/kg	2	< RL	< RL	< RL	< RL
Mercury (Hg)	mg/kg	2	< RL	< RL	< RL	< RL
Chromium VI (Cr VI)*	mg/kg	8	< RL	< RL	< RL	< RL
Sum of Polybrominated biphenyls (PBBs)	mg/kg	-	< RL	< RL	< RL	< RL
Monobromobiphenyl	mg/kg	5	< RL	< RL	< RL	< RL
Dibromobiphenyl	mg/kg	5	< RL	< RL	< RL	< RL
Tribromobiphenyl	mg/kg	5	< RL	< RL	< RL	< RL
Tetrabromobiphenyl	mg/kg	5	< RL	< RL	< RL	< RL
Pentabromobiphenyl	mg/kg	5	< RL	< RL	< RL	< RL
Hexabromobiphenyl	mg/kg	5	< RL	< RL	< RL	< RL
Heptabromobiphenyl	mg/kg	5	< RL	< RL	< RL	< RL
Octabromobiphenyl	mg/kg	5	< RL	< RL	< RL	< RL
Nonabromobiphenyl	mg/kg	5	< RL	< RL	< RL	< RL
Decabromobiphenyl	mg/kg	5	< RL	< RL	< RL	< RL
Sum of Polybrominated diphenyl ethers (PBDEs)	mg/kg	-	< RL	< RL	< RL	< RL
Monobromodiphenyl ether	mg/kg	5	< RL	< RL	< RL	< RL
Dibromodiphenyl ether	mg/kg	5	< RL	< RL	< RL	< RL
Tribromodiphenyl ether	mg/kg	5	< RL	< RL	< RL	< RL
Tetrabromodiphenyl ether	mg/kg	5	< RL	< RL	< RL	< RL
Pentabromodiphenyl ether	mg/kg	5	< RL	< RL	< RL	< RL
Hexabromodiphenyl ether	mg/kg	5	< RL	< RL	< RL	< RL
Heptabromodiphenyl ether	mg/kg	5	< RL	< RL	< RL	< RL
Octabromodiphenyl ether	mg/kg	5	< RL	< RL	< RL	< RL
Nonabromodiphenyl ether	mg/kg	5	< RL	< RL	< RL	< RL
Decabromodiphenyl ether	mg/kg	5	< RL	< RL	< RL	< RL

Notes:

- < = less than
- RL = Reporting Limit
- n.a. = not applicable
- mg/kg = milligram per kilogram
- * Once the total Cr content in metal/ plastic or electronic sample is found to be exceeded the limit, the Cr (VI) content will be confirmed with reference to IEC 62321-7-1:2015/ IEC 62321-7-2:2017

Test Report No. : 238133684z 001
 Customer : Formosa Chemicals & Fibre Corporation
 Test Method : Total Cadmium, Lead, Mercury, Chromium
 - Ref. to IEC 62321-4:2013 and IEC 62321-5:2013
 Chromium (VI)
 - For Metal material - Ref. to IEC 62321-7-1:2015
 - For Plastic or Electronic material - Ref. to IEC 62321-7-2:2017
 - For Leather material - Ref. to EN ISO 17075-1:2017
 PBBs, PBDEs - Ref. to IEC 62321-6:2015

2020-02-12

Sample/Material No.		RL	17	18	19	20
Cadmium (Cd)	mg/kg	2	< RL	< RL	< RL	< RL
Lead (Pb)	mg/kg	2	< RL	< RL	< RL	< RL
Mercury (Hg)	mg/kg	2	< RL	< RL	< RL	< RL
Chromium VI (Cr VI)*	mg/kg	8	< RL	< RL	< RL	< RL
Sum of Polybrominated biphenyls (PBBs)	mg/kg	-	< RL	< RL	< RL	< RL
Monobromobiphenyl	mg/kg	5	< RL	< RL	< RL	< RL
Dibromobiphenyl	mg/kg	5	< RL	< RL	< RL	< RL
Tribromobiphenyl	mg/kg	5	< RL	< RL	< RL	< RL
Tetrabromobiphenyl	mg/kg	5	< RL	< RL	< RL	< RL
Pentabromobiphenyl	mg/kg	5	< RL	< RL	< RL	< RL
Hexabromobiphenyl	mg/kg	5	< RL	< RL	< RL	< RL
Heptabromobiphenyl	mg/kg	5	< RL	< RL	< RL	< RL
Octabromobiphenyl	mg/kg	5	< RL	< RL	< RL	< RL
Nonabromobiphenyl	mg/kg	5	< RL	< RL	< RL	< RL
Decabromobiphenyl	mg/kg	5	< RL	< RL	< RL	< RL
Sum of Polybrominated diphenyl ethers (PBDEs)	mg/kg	-	< RL	< RL	< RL	< RL
Monobromodiphenyl ether	mg/kg	5	< RL	< RL	< RL	< RL
Dibromodiphenyl ether	mg/kg	5	< RL	< RL	< RL	< RL
Tribromodiphenyl ether	mg/kg	5	< RL	< RL	< RL	< RL
Tetrabromodiphenyl ether	mg/kg	5	< RL	< RL	< RL	< RL
Pentabromodiphenyl ether	mg/kg	5	< RL	< RL	< RL	< RL
Hexabromodiphenyl ether	mg/kg	5	< RL	< RL	< RL	< RL
Heptabromodiphenyl ether	mg/kg	5	< RL	< RL	< RL	< RL
Octabromodiphenyl ether	mg/kg	5	< RL	< RL	< RL	< RL
Nonabromodiphenyl ether	mg/kg	5	< RL	< RL	< RL	< RL
Decabromodiphenyl ether	mg/kg	5	< RL	< RL	< RL	< RL

Notes:

- < = less than
- RL = Reporting Limit
- n.a. = not applicable
- mg/kg = milligram per kilogram
- * Once the total Cr content in metal/ plastic or electronic sample is found to be exceeded the limit, the Cr (VI) content will be confirmed with reference to IEC 62321-7-1:2015/ IEC 62321-7-2:2017

Test Report No. : 238133684z 001
 Customer : Formosa Chemicals & Fibre Corporation
 Test Method : Total Cadmium, Lead, Mercury, Chromium
 - Ref. to IEC 62321-4:2013 and IEC 62321-5:2013
 Chromium (VI)
 - For Metal material - Ref. to IEC 62321-7-1:2015
 - For Plastic or Electronic material - Ref. to IEC 62321-7-2:2017
 - For Leather material - Ref. to EN ISO 17075-1:2017
 PBBs, PBDEs - Ref. to IEC 62321-6:2015

2020-02-12

Sample/Material No.		RL	21	22	23	24
Cadmium (Cd)	mg/kg	2	< RL	< RL	< RL	< RL
Lead (Pb)	mg/kg	2	< RL	< RL	< RL	< RL
Mercury (Hg)	mg/kg	2	< RL	< RL	< RL	< RL
Chromium VI (Cr VI)*	mg/kg	8	< RL	< RL	< RL	< RL
Sum of Polybrominated biphenyls (PBBs)	mg/kg	-	< RL	< RL	< RL	< RL
Monobromobiphenyl	mg/kg	5	< RL	< RL	< RL	< RL
Dibromobiphenyl	mg/kg	5	< RL	< RL	< RL	< RL
Tribromobiphenyl	mg/kg	5	< RL	< RL	< RL	< RL
Tetrabromobiphenyl	mg/kg	5	< RL	< RL	< RL	< RL
Pentabromobiphenyl	mg/kg	5	< RL	< RL	< RL	< RL
Hexabromobiphenyl	mg/kg	5	< RL	< RL	< RL	< RL
Heptabromobiphenyl	mg/kg	5	< RL	< RL	< RL	< RL
Octabromobiphenyl	mg/kg	5	< RL	< RL	< RL	< RL
Nonabromobiphenyl	mg/kg	5	< RL	< RL	< RL	< RL
Decabromobiphenyl	mg/kg	5	< RL	< RL	< RL	< RL
Sum of Polybrominated diphenyl ethers (PBDEs)	mg/kg	-	< RL	< RL	< RL	< RL
Monobromodiphenyl ether	mg/kg	5	< RL	< RL	< RL	< RL
Dibromodiphenyl ether	mg/kg	5	< RL	< RL	< RL	< RL
Tribromodiphenyl ether	mg/kg	5	< RL	< RL	< RL	< RL
Tetrabromodiphenyl ether	mg/kg	5	< RL	< RL	< RL	< RL
Pentabromodiphenyl ether	mg/kg	5	< RL	< RL	< RL	< RL
Hexabromodiphenyl ether	mg/kg	5	< RL	< RL	< RL	< RL
Heptabromodiphenyl ether	mg/kg	5	< RL	< RL	< RL	< RL
Octabromodiphenyl ether	mg/kg	5	< RL	< RL	< RL	< RL
Nonabromodiphenyl ether	mg/kg	5	< RL	< RL	< RL	< RL
Decabromodiphenyl ether	mg/kg	5	< RL	< RL	< RL	< RL

Notes:

- < = less than
- RL = Reporting Limit
- n.a. = not applicable
- mg/kg = milligram per kilogram
- * Once the total Cr content in metal/ plastic or electronic sample is found to be exceeded the limit, the Cr (VI) content will be confirmed with reference to IEC 62321-7-1:2015/ IEC 62321-7-2:2017

Test Report No. : 238133684z 001
 Customer : Formosa Chemicals & Fibre Corporation
 Test Method : Total Cadmium, Lead, Mercury, Chromium
 - Ref. to IEC 62321-4:2013 and IEC 62321-5:2013
 Chromium (VI)
 - For Metal material - Ref. to IEC 62321-7-1:2015
 - For Plastic or Electronic material - Ref. to IEC 62321-7-2:2017
 - For Leather material - Ref. to EN ISO 17075-1:2017
 PBBs, PBDEs - Ref. to IEC 62321-6:2015

2020-02-12

Sample/Material No.		RL	25	26	27	28
Cadmium (Cd)	mg/kg	2	< RL	< RL	< RL	< RL
Lead (Pb)	mg/kg	2	< RL	< RL	< RL	< RL
Mercury (Hg)	mg/kg	2	< RL	< RL	< RL	< RL
Chromium VI (Cr VI)*	mg/kg	8	< RL	< RL	< RL	< RL
Sum of Polybrominated biphenyls (PBBs)	mg/kg	-	< RL	< RL	< RL	< RL
Monobromobiphenyl	mg/kg	5	< RL	< RL	< RL	< RL
Dibromobiphenyl	mg/kg	5	< RL	< RL	< RL	< RL
Tribromobiphenyl	mg/kg	5	< RL	< RL	< RL	< RL
Tetrabromobiphenyl	mg/kg	5	< RL	< RL	< RL	< RL
Pentabromobiphenyl	mg/kg	5	< RL	< RL	< RL	< RL
Hexabromobiphenyl	mg/kg	5	< RL	< RL	< RL	< RL
Heptabromobiphenyl	mg/kg	5	< RL	< RL	< RL	< RL
Octabromobiphenyl	mg/kg	5	< RL	< RL	< RL	< RL
Nonabromobiphenyl	mg/kg	5	< RL	< RL	< RL	< RL
Decabromobiphenyl	mg/kg	5	< RL	< RL	< RL	< RL
Sum of Polybrominated diphenyl ethers (PBDEs)	mg/kg	-	< RL	< RL	< RL	< RL
Monobromodiphenyl ether	mg/kg	5	< RL	< RL	< RL	< RL
Dibromodiphenyl ether	mg/kg	5	< RL	< RL	< RL	< RL
Tribromodiphenyl ether	mg/kg	5	< RL	< RL	< RL	< RL
Tetrabromodiphenyl ether	mg/kg	5	< RL	< RL	< RL	< RL
Pentabromodiphenyl ether	mg/kg	5	< RL	< RL	< RL	< RL
Hexabromodiphenyl ether	mg/kg	5	< RL	< RL	< RL	< RL
Heptabromodiphenyl ether	mg/kg	5	< RL	< RL	< RL	< RL
Octabromodiphenyl ether	mg/kg	5	< RL	< RL	< RL	< RL
Nonabromodiphenyl ether	mg/kg	5	< RL	< RL	< RL	< RL
Decabromodiphenyl ether	mg/kg	5	< RL	< RL	< RL	< RL

Notes:

- < = less than
- RL = Reporting Limit
- n.a. = not applicable
- mg/kg = milligram per kilogram
- * Once the total Cr content in metal/ plastic or electronic sample is found to be exceeded the limit, the Cr (VI) content will be confirmed with reference to IEC 62321-7-1:2015/ IEC 62321-7-2:2017

Test Report No. : 238133684z 001
 Customer : Formosa Chemicals & Fibre Corporation
 Test Method : Total Cadmium, Lead, Mercury, Chromium
 - Ref. to IEC 62321-4:2013 and IEC 62321-5:2013
 Chromium (VI)
 - For Metal material - Ref. to IEC 62321-7-1:2015
 - For Plastic or Electronic material - Ref. to IEC 62321-7-2:2017
 - For Leather material - Ref. to EN ISO 17075-1:2017
 PBBs, PBDEs - Ref. to IEC 62321-6:2015

2020-02-12

Sample/Material No.		RL	29	30	31	32
Cadmium (Cd)	mg/kg	2	< RL	< RL	< RL	< RL
Lead (Pb)	mg/kg	2	< RL	< RL	< RL	< RL
Mercury (Hg)	mg/kg	2	< RL	< RL	< RL	< RL
Chromium VI (Cr VI)*	mg/kg	8	< RL	< RL	< RL	< RL
Sum of Polybrominated biphenyls (PBBs)	mg/kg	-	< RL	< RL	< RL	< RL
Monobromobiphenyl	mg/kg	5	< RL	< RL	< RL	< RL
Dibromobiphenyl	mg/kg	5	< RL	< RL	< RL	< RL
Tribromobiphenyl	mg/kg	5	< RL	< RL	< RL	< RL
Tetrabromobiphenyl	mg/kg	5	< RL	< RL	< RL	< RL
Pentabromobiphenyl	mg/kg	5	< RL	< RL	< RL	< RL
Hexabromobiphenyl	mg/kg	5	< RL	< RL	< RL	< RL
Heptabromobiphenyl	mg/kg	5	< RL	< RL	< RL	< RL
Octabromobiphenyl	mg/kg	5	< RL	< RL	< RL	< RL
Nonabromobiphenyl	mg/kg	5	< RL	< RL	< RL	< RL
Decabromobiphenyl	mg/kg	5	< RL	< RL	< RL	< RL
Sum of Polybrominated diphenyl ethers (PBDEs)	mg/kg	-	< RL	< RL	< RL	< RL
Monobromodiphenyl ether	mg/kg	5	< RL	< RL	< RL	< RL
Dibromodiphenyl ether	mg/kg	5	< RL	< RL	< RL	< RL
Tribromodiphenyl ether	mg/kg	5	< RL	< RL	< RL	< RL
Tetrabromodiphenyl ether	mg/kg	5	< RL	< RL	< RL	< RL
Pentabromodiphenyl ether	mg/kg	5	< RL	< RL	< RL	< RL
Hexabromodiphenyl ether	mg/kg	5	< RL	< RL	< RL	< RL
Heptabromodiphenyl ether	mg/kg	5	< RL	< RL	< RL	< RL
Octabromodiphenyl ether	mg/kg	5	< RL	< RL	< RL	< RL
Nonabromodiphenyl ether	mg/kg	5	< RL	< RL	< RL	< RL
Decabromodiphenyl ether	mg/kg	5	< RL	< RL	< RL	< RL

Notes:

- < = less than
- RL = Reporting Limit
- n.a. = not applicable
- mg/kg = milligram per kilogram
- * Once the total Cr content in metal/ plastic or electronic sample is found to be exceeded the limit, the Cr (VI) content will be confirmed with reference to IEC 62321-7-1:2015/ IEC 62321-7-2:2017

Test Report No. : 238133684z 001
 Customer : Formosa Chemicals & Fibre Corporation
 Test Method : Total Cadmium, Lead, Mercury, Chromium
 - Ref. to IEC 62321-4:2013 and IEC 62321-5:2013
 Chromium (VI)
 - For Metal material - Ref. to IEC 62321-7-1:2015
 - For Plastic or Electronic material - Ref. to IEC 62321-7-2:2017
 - For Leather material - Ref. to EN ISO 17075-1:2017
 PBBs, PBDEs - Ref. to IEC 62321-6:2015

2020-02-12

Sample/Material No.		RL	33	34	35	36
Cadmium (Cd)	mg/kg	2	< RL	< RL	< RL	< RL
Lead (Pb)	mg/kg	2	< RL	< RL	< RL	< RL
Mercury (Hg)	mg/kg	2	< RL	< RL	< RL	< RL
Chromium VI (Cr VI)*	mg/kg	8	< RL	< RL	< RL	< RL
Sum of Polybrominated biphenyls (PBBs)	mg/kg	-	< RL	< RL	< RL	< RL
Monobromobiphenyl	mg/kg	5	< RL	< RL	< RL	< RL
Dibromobiphenyl	mg/kg	5	< RL	< RL	< RL	< RL
Tribromobiphenyl	mg/kg	5	< RL	< RL	< RL	< RL
Tetrabromobiphenyl	mg/kg	5	< RL	< RL	< RL	< RL
Pentabromobiphenyl	mg/kg	5	< RL	< RL	< RL	< RL
Hexabromobiphenyl	mg/kg	5	< RL	< RL	< RL	< RL
Heptabromobiphenyl	mg/kg	5	< RL	< RL	< RL	< RL
Octabromobiphenyl	mg/kg	5	< RL	< RL	< RL	< RL
Nonabromobiphenyl	mg/kg	5	< RL	< RL	< RL	< RL
Decabromobiphenyl	mg/kg	5	< RL	< RL	< RL	< RL
Sum of Polybrominated diphenyl ethers (PBDEs)	mg/kg	-	< RL	< RL	< RL	< RL
Monobromodiphenyl ether	mg/kg	5	< RL	< RL	< RL	< RL
Dibromodiphenyl ether	mg/kg	5	< RL	< RL	< RL	< RL
Tribromodiphenyl ether	mg/kg	5	< RL	< RL	< RL	< RL
Tetrabromodiphenyl ether	mg/kg	5	< RL	< RL	< RL	< RL
Pentabromodiphenyl ether	mg/kg	5	< RL	< RL	< RL	< RL
Hexabromodiphenyl ether	mg/kg	5	< RL	< RL	< RL	< RL
Heptabromodiphenyl ether	mg/kg	5	< RL	< RL	< RL	< RL
Octabromodiphenyl ether	mg/kg	5	< RL	< RL	< RL	< RL
Nonabromodiphenyl ether	mg/kg	5	< RL	< RL	< RL	< RL
Decabromodiphenyl ether	mg/kg	5	< RL	< RL	< RL	< RL

Notes:

- < = less than
- RL = Reporting Limit
- n.a. = not applicable
- mg/kg = milligram per kilogram
- * Once the total Cr content in metal/ plastic or electronic sample is found to be exceeded the limit, the Cr (VI) content will be confirmed with reference to IEC 62321-7-1:2015/ IEC 62321-7-2:2017

Test Report No. : 238133684z 001
 Customer : Formosa Chemicals & Fibre Corporation
 Test Method : Total Cadmium, Lead, Mercury, Chromium
 - Ref. to IEC 62321-4:2013 and IEC 62321-5:2013
 Chromium (VI)
 - For Metal material - Ref. to IEC 62321-7-1:2015
 - For Plastic or Electronic material - Ref. to IEC 62321-7-2:2017
 - For Leather material - Ref. to EN ISO 17075-1:2017
 PBBs, PBDEs - Ref. to IEC 62321-6:2015

2020-02-12

Sample/Material No.		RL	37	38	39	40
Cadmium (Cd)	mg/kg	2	< RL	< RL	< RL	< RL
Lead (Pb)	mg/kg	2	< RL	< RL	< RL	< RL
Mercury (Hg)	mg/kg	2	< RL	< RL	< RL	< RL
Chromium VI (Cr VI)*	mg/kg	8	< RL	< RL	< RL	< RL
Sum of Polybrominated biphenyls (PBBs)	mg/kg	-	< RL	< RL	< RL	< RL
Monobromobiphenyl	mg/kg	5	< RL	< RL	< RL	< RL
Dibromobiphenyl	mg/kg	5	< RL	< RL	< RL	< RL
Tribromobiphenyl	mg/kg	5	< RL	< RL	< RL	< RL
Tetrabromobiphenyl	mg/kg	5	< RL	< RL	< RL	< RL
Pentabromobiphenyl	mg/kg	5	< RL	< RL	< RL	< RL
Hexabromobiphenyl	mg/kg	5	< RL	< RL	< RL	< RL
Heptabromobiphenyl	mg/kg	5	< RL	< RL	< RL	< RL
Octabromobiphenyl	mg/kg	5	< RL	< RL	< RL	< RL
Nonabromobiphenyl	mg/kg	5	< RL	< RL	< RL	< RL
Decabromobiphenyl	mg/kg	5	< RL	< RL	< RL	< RL
Sum of Polybrominated diphenyl ethers (PBDEs)	mg/kg	-	< RL	< RL	< RL	< RL
Monobromodiphenyl ether	mg/kg	5	< RL	< RL	< RL	< RL
Dibromodiphenyl ether	mg/kg	5	< RL	< RL	< RL	< RL
Tribromodiphenyl ether	mg/kg	5	< RL	< RL	< RL	< RL
Tetrabromodiphenyl ether	mg/kg	5	< RL	< RL	< RL	< RL
Pentabromodiphenyl ether	mg/kg	5	< RL	< RL	< RL	< RL
Hexabromodiphenyl ether	mg/kg	5	< RL	< RL	< RL	< RL
Heptabromodiphenyl ether	mg/kg	5	< RL	< RL	< RL	< RL
Octabromodiphenyl ether	mg/kg	5	< RL	< RL	< RL	< RL
Nonabromodiphenyl ether	mg/kg	5	< RL	< RL	< RL	< RL
Decabromodiphenyl ether	mg/kg	5	< RL	< RL	< RL	< RL

Notes:

- < = less than
- RL = Reporting Limit
- n.a. = not applicable
- mg/kg = milligram per kilogram
- * Once the total Cr content in metal/ plastic or electronic sample is found to be exceeded the limit, the Cr (VI) content will be confirmed with reference to IEC 62321-7-1:2015/ IEC 62321-7-2:2017

	Cd	Cr(VI)	Pb	Hg	PBBs	PBDEs
Maximum permissible Limit acc. to 2011/65/EU (mg/kg)	100	1000	1000	1000	1000	1000

Test Report No. : 238133684z 001
 Customer : Formosa Chemicals & Fibre Corporation
 Test Method : BBP/DBP/DEHP/DIBP - Ref. to IEC 62321-8:2017

2020-02-12

Sample/Material No.	RL	1	2	3	4
Benzylbutylphthalate (BBP) mg/kg	50	< RL	< RL	< RL	< RL
Dibutylphthalate (DBP) mg/kg	50	< RL	< RL	< RL	< RL
Diethylhexylphthalate (DEHP) mg/kg	50	< RL	< RL	< RL	< RL
Diisobutylphthalate (DIBP) mg/kg	50	< RL	< RL	< RL	< RL

Sample/Material No.	RL	5	6	7	8
Benzylbutylphthalate (BBP) mg/kg	50	< RL	< RL	< RL	< RL
Dibutylphthalate (DBP) mg/kg	50	< RL	< RL	< RL	< RL
Diethylhexylphthalate (DEHP) mg/kg	50	< RL	< RL	< RL	< RL
Diisobutylphthalate (DIBP) mg/kg	50	< RL	< RL	< RL	< RL

Sample/Material No.	RL	9	10	11	12
Benzylbutylphthalate (BBP) mg/kg	50	< RL	< RL	< RL	< RL
Dibutylphthalate (DBP) mg/kg	50	< RL	< RL	< RL	< RL
Diethylhexylphthalate (DEHP) mg/kg	50	< RL	< RL	< RL	< RL
Diisobutylphthalate (DIBP) mg/kg	50	< RL	< RL	< RL	< RL

Sample/Material No.	RL	13	14	15	16
Benzylbutylphthalate (BBP) mg/kg	50	< RL	< RL	< RL	< RL
Dibutylphthalate (DBP) mg/kg	50	< RL	< RL	< RL	< RL
Diethylhexylphthalate (DEHP) mg/kg	50	< RL	< RL	< RL	< RL
Diisobutylphthalate (DIBP) mg/kg	50	< RL	< RL	< RL	< RL

Notes:

- < = less than
- RL = Reporting Limit
- n.a. = not applicable
- mg/kg = milligram per kilogram

Test Report No. : 238133684z 001
 Customer : Formosa Chemicals & Fibre Corporation
 Test Method : BBP/DBP/DEHP/DIBP - Ref. to IEC 62321-8:2017

2020-02-12

Sample/Material No.	RL	17	18	19	20
Benzylbutylphthalate (BBP) mg/kg	50	< RL	< RL	< RL	< RL
Dibutylphthalate (DBP) mg/kg	50	< RL	< RL	< RL	< RL
Diethylhexylphthalate (DEHP) mg/kg	50	< RL	< RL	< RL	< RL
Diisobutylphthalate (DIBP) mg/kg	50	< RL	< RL	< RL	< RL

Sample/Material No.	RL	21	22	23	24
Benzylbutylphthalate (BBP) mg/kg	50	< RL	< RL	< RL	< RL
Dibutylphthalate (DBP) mg/kg	50	< RL	< RL	< RL	< RL
Diethylhexylphthalate (DEHP) mg/kg	50	< RL	< RL	< RL	< RL
Diisobutylphthalate (DIBP) mg/kg	50	< RL	< RL	< RL	< RL

Sample/Material No.	RL	25	26	27	28
Benzylbutylphthalate (BBP) mg/kg	50	< RL	< RL	< RL	< RL
Dibutylphthalate (DBP) mg/kg	50	< RL	< RL	< RL	< RL
Diethylhexylphthalate (DEHP) mg/kg	50	< RL	< RL	< RL	< RL
Diisobutylphthalate (DIBP) mg/kg	50	< RL	< RL	< RL	< RL

Sample/Material No.	RL	29	30	31	32
Benzylbutylphthalate (BBP) mg/kg	50	< RL	< RL	< RL	< RL
Dibutylphthalate (DBP) mg/kg	50	< RL	< RL	< RL	< RL
Diethylhexylphthalate (DEHP) mg/kg	50	< RL	< RL	< RL	< RL
Diisobutylphthalate (DIBP) mg/kg	50	< RL	< RL	< RL	< RL

Notes:

- < = less than
- RL = Reporting Limit
- n.a. = not applicable
- mg/kg = milligram per kilogram

Test Report No. : 238133684z 001
 Customer : Formosa Chemicals & Fibre Corporation
 Test Method : BBP/DBP/DEHP/DIBP - Ref. to IEC 62321-8:2017

2020-02-12

Sample/Material No.	RL	33	34	35	36
Benzylbutylphthalate (BBP) mg/kg	50	< RL	< RL	< RL	< RL
Dibutylphthalate (DBP) mg/kg	50	< RL	< RL	< RL	< RL
Diethylhexylphthalate (DEHP) mg/kg	50	< RL	< RL	< RL	< RL
Diisobutylphthalate (DIBP) mg/kg	50	< RL	< RL	< RL	< RL

Sample/Material No.	RL	37	38	39	40
Benzylbutylphthalate (BBP) mg/kg	50	< RL	< RL	< RL	< RL
Dibutylphthalate (DBP) mg/kg	50	< RL	< RL	< RL	< RL
Diethylhexylphthalate (DEHP) mg/kg	50	< RL	< RL	< RL	< RL
Diisobutylphthalate (DIBP) mg/kg	50	< RL	< RL	< RL	< RL

Notes:

- < = less than
- RL = Reporting Limit
- n.a. = not applicable
- mg/kg = milligram per kilogram

	BBP	DBP	DEHP	DIBP
Maximum permissible Limit acc. to (EU) 2015/863 (mg/kg)	1000	1000	1000	1000

Test Report No. : 238133684z 001
Customer : Formosa Chemicals & Fibre Corporation

2020-02-12

Test Sample



1



2



3



4



5



6



7



8



9



10



11



12

Test Report No. : 238133684z 001
Customer : Formosa Chemicals & Fibre Corporation

2020-02-12



13



14



15



16



17



18



19



20



21



22



23



24

Test Report No. : 238133684z 001
Customer : Formosa Chemicals & Fibre Corporation

2020-02-12



25



26



27



28



29



30



31



32



33



34



35



36

Test Report No. : 238133684z 001
Customer : Formosa Chemicals & Fibre Corporation

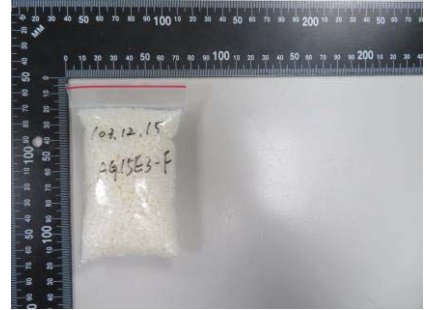
2020-02-12



37



38



39



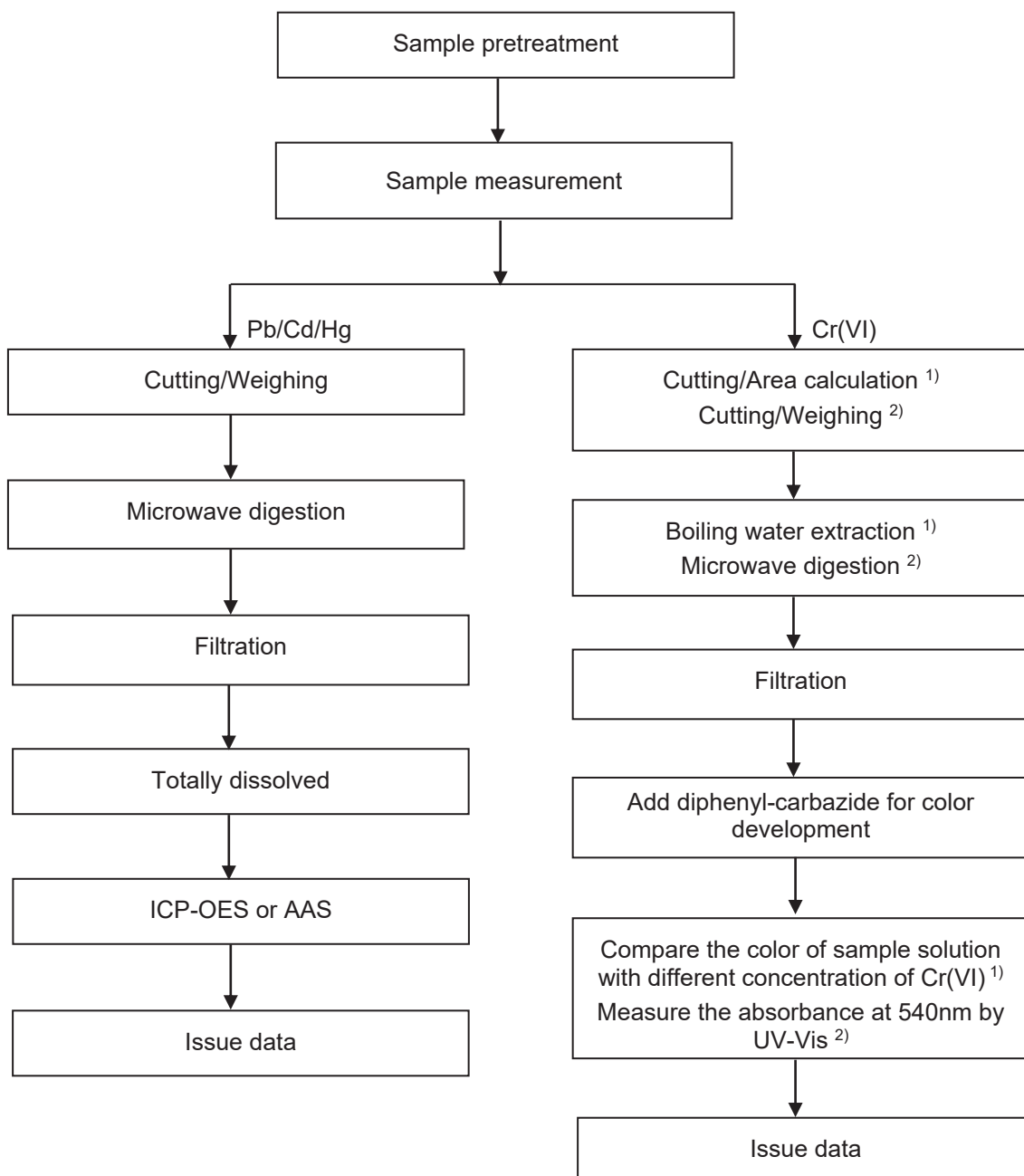
40

Test Report No. : 238133684z 001
Customer : Formosa Chemicals & Fibre Corporation

2020-02-12

Testing procedure:

RoHS (Pb, Cd, Hg, Cr(VI))



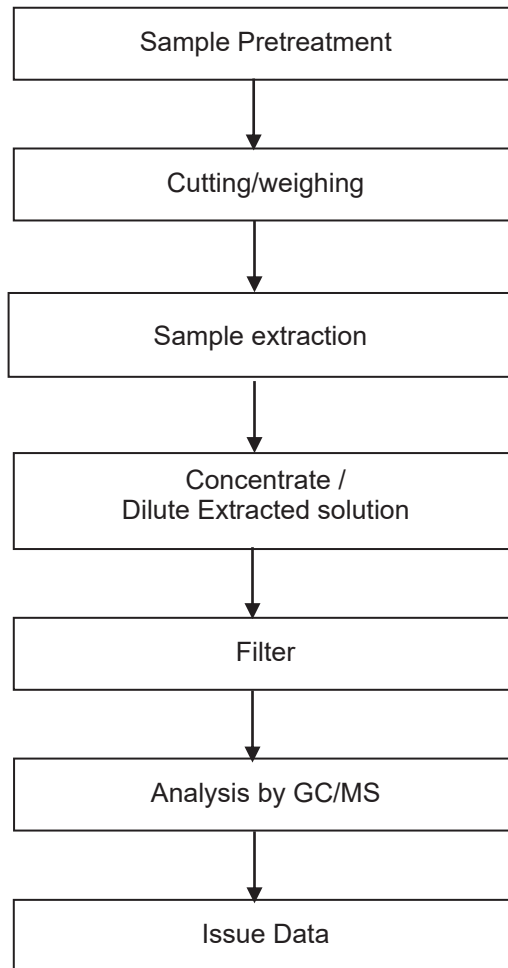
Notes: ¹⁾ For metallic material
²⁾ For non-metallic material

Test Report No. : 238133684z 001
Customer : Formosa Chemicals & Fibre Corporation

2020-02-12

Testing procedure:

RoHS (PBBs/PBDEs, DEHP/DBP/BBP/DIBP)



--- End of Test-Report ---